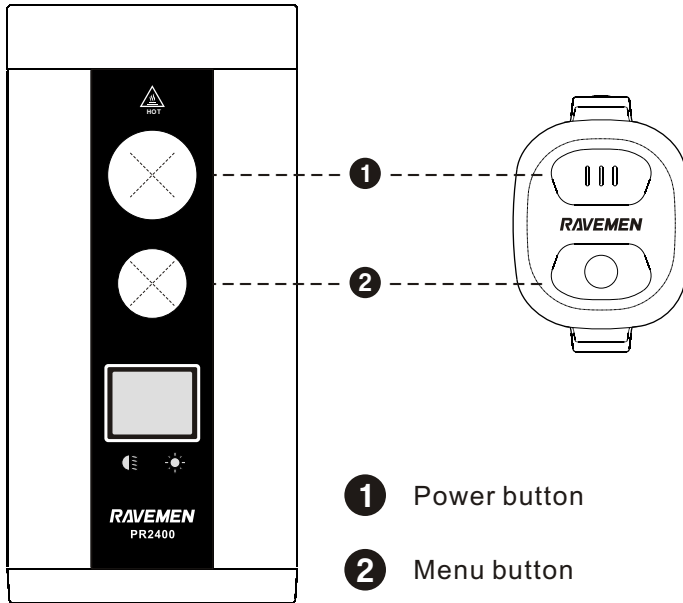


RAVEMEN PR2400 Remote Switch Pairing



To pair a new remote switch, please disconnect the light with the original remote switch firstly:

Turn on the light, press and hold the power button and menu button simultaneously for 2 seconds till the ✂ icon on the OLED display stops blinking.

Pair the light with the new remote switch:

1. Keep the light on, press and hold the power button and menu button simultaneously for 2 seconds until the ✂ icon on the OLED display is blinking;
2. Press and hold the power button and menu button of the remote switch simultaneously for 2.5 seconds to connect with the light. When connected, the ✂ icon on the OLED display will change to ✂ and stop flashing; If not, repeat this step;
3. Wait 5 seconds until the light flashes twice after pairing successfully.